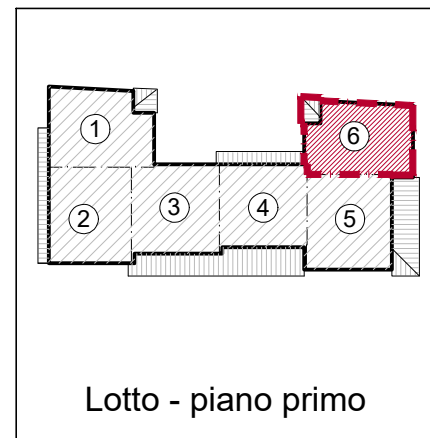
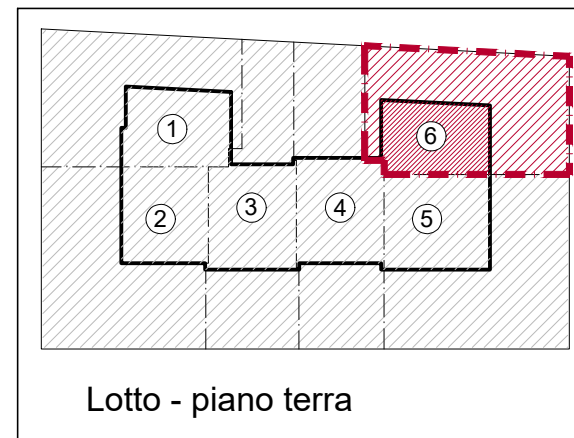
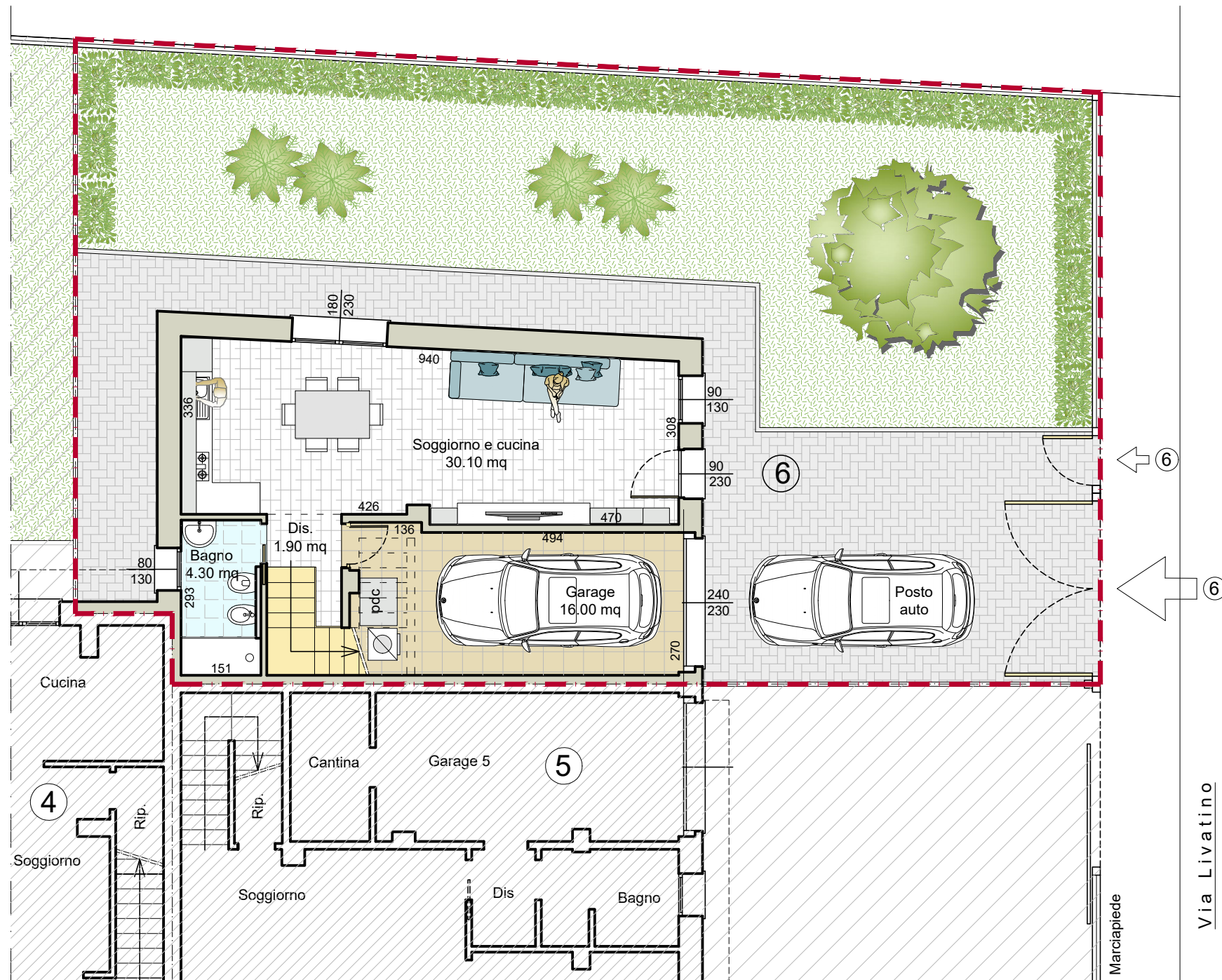
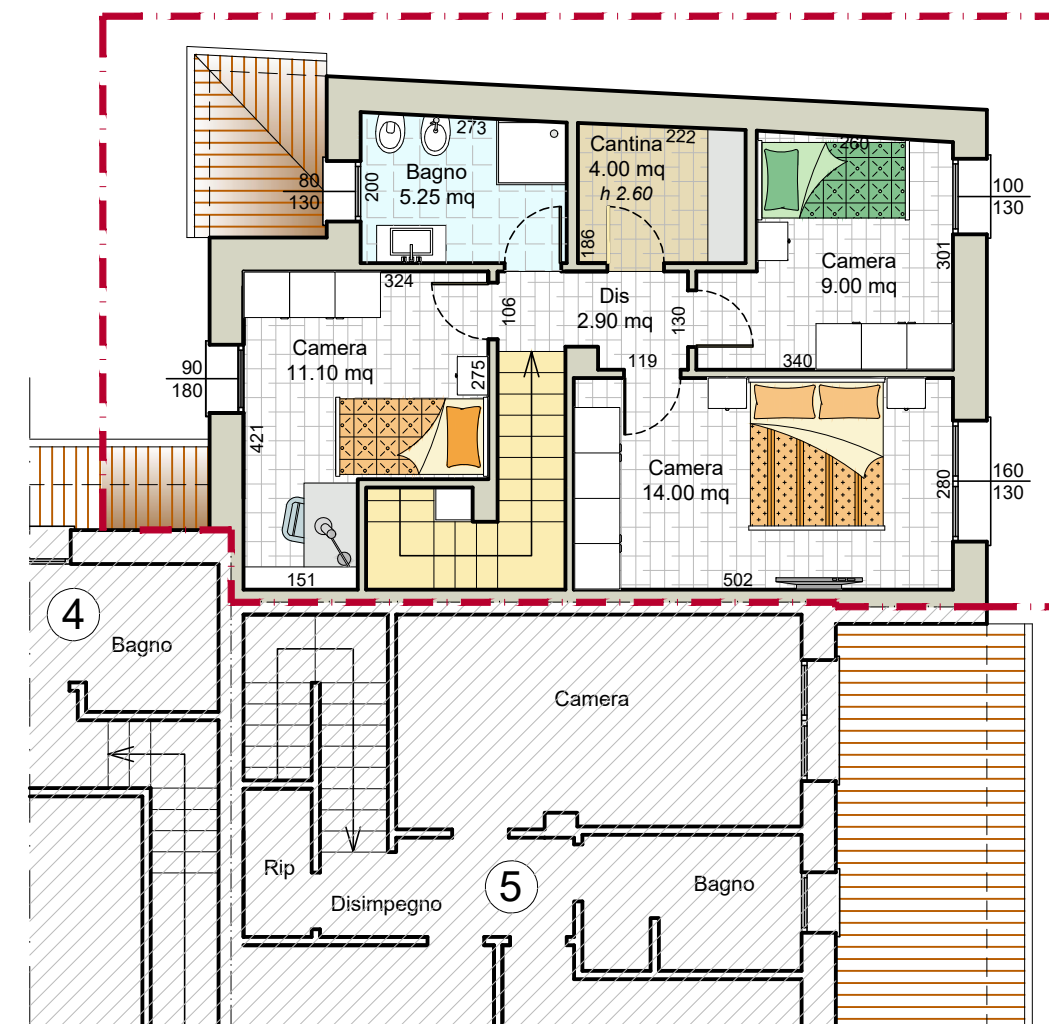




# Piano terra



# Piano primo



### SUPERFICIE CALPESTABILE :

Piano Terra 52.30 mq.  
 Piano Primo 46.25 mq.  
 TOT sup. calpestabile = 98.55 mq.

## Villetta 6

Piano Terra 69.64 mq.  
 Piano Primo 66.15 mq.  
 Area esterna 15.33 mq. ( mq 153.27 al 10%)  
 CONSISTENZA TOTALE COMMERCIALE 151.12 mq.



**PROGETTAZIONE - COSTRUZIONE - VENDITA**

Via Della Libertà, 5 - Lugo (RA) - Tel. 0545 288329 [www.gruppomargarita.it](http://www.gruppomargarita.it)