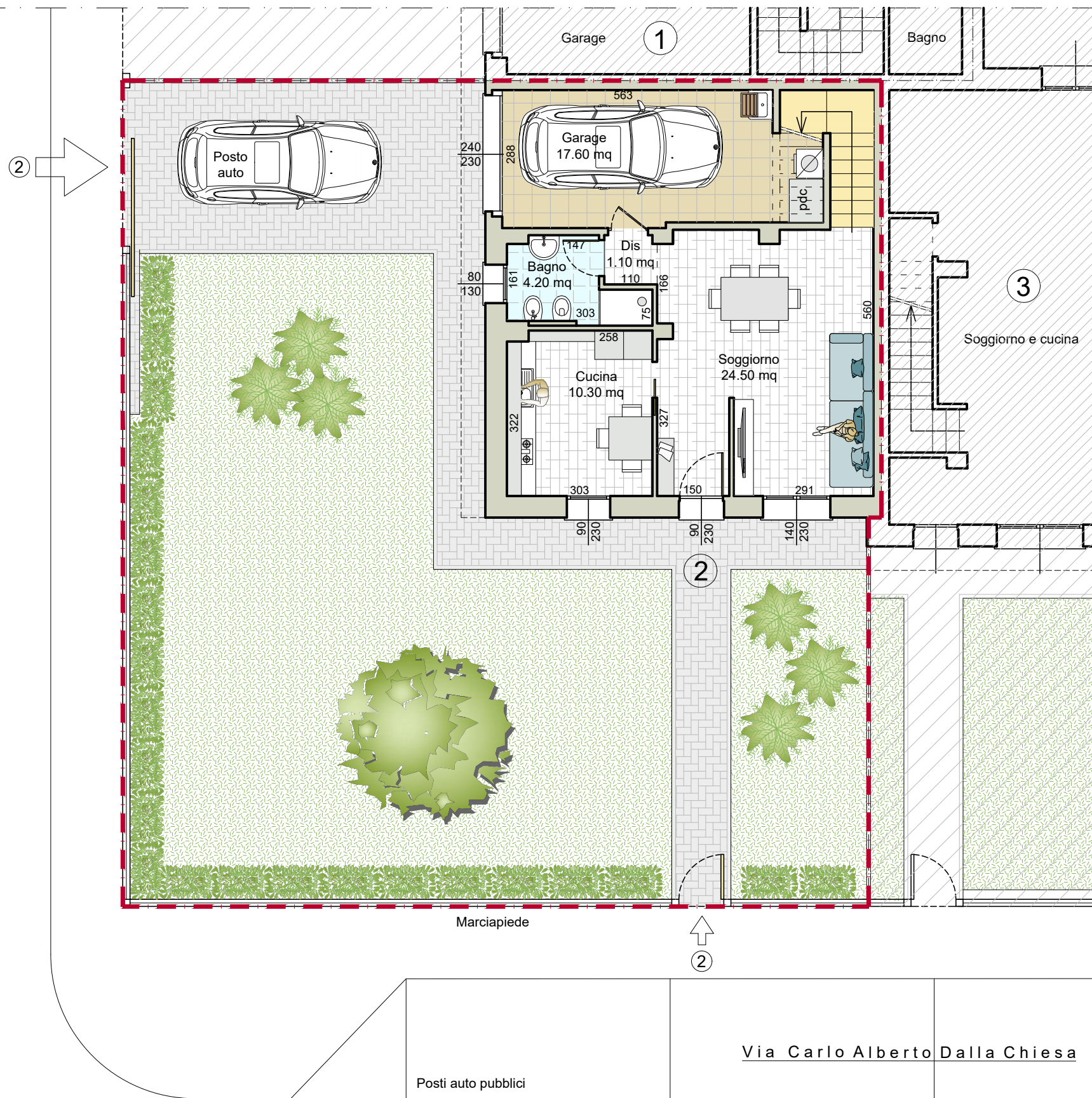
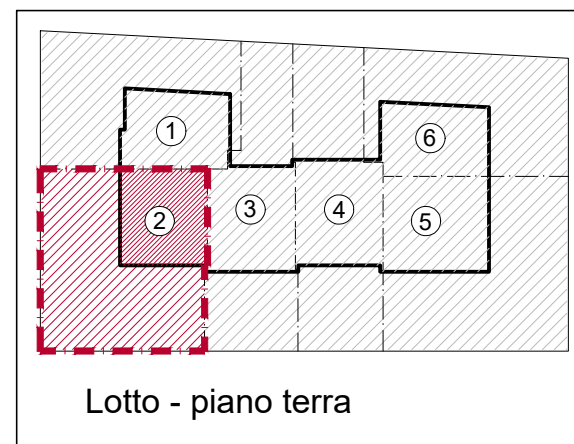
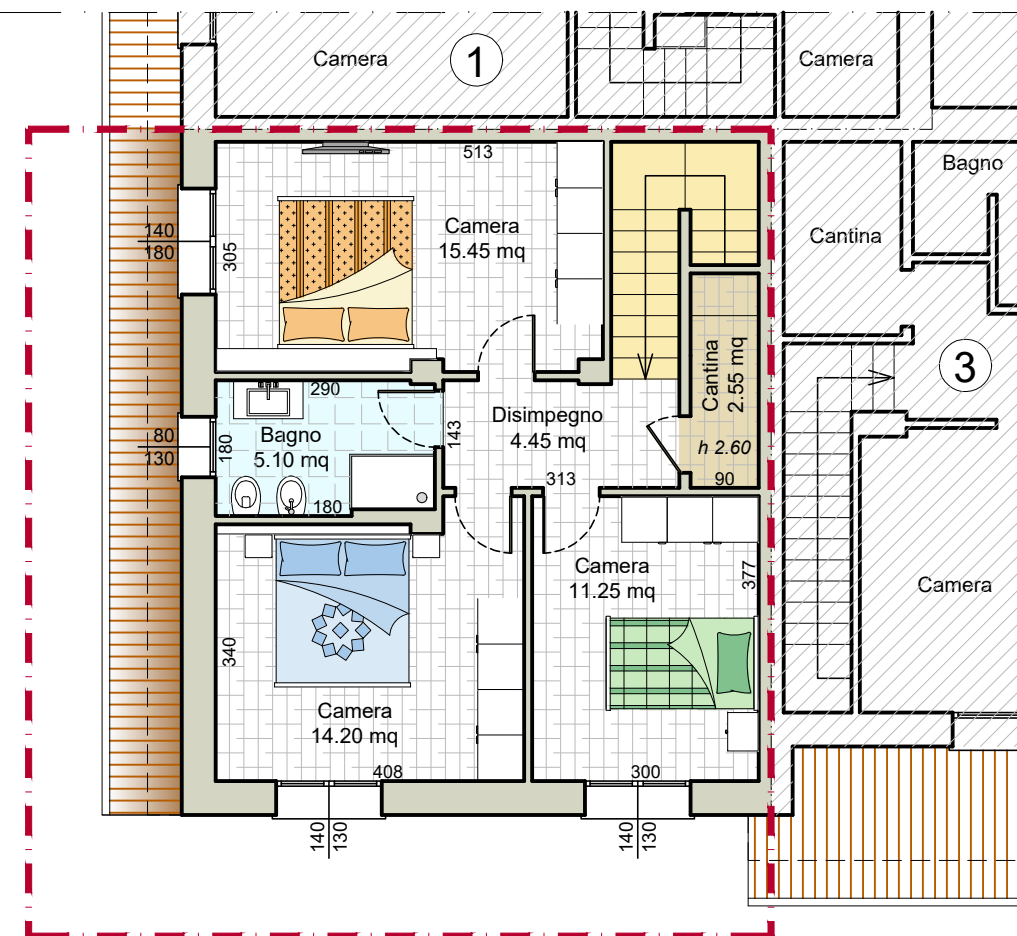




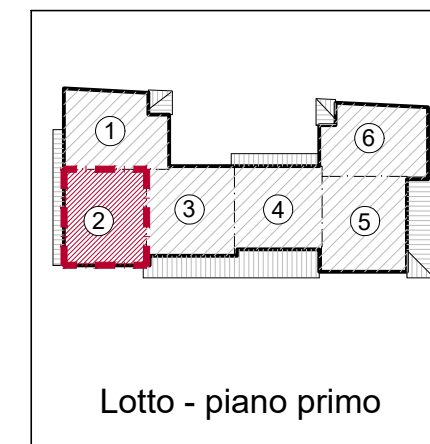
# Piano terra



# Piano primo



Lotto - piano terra



Lotto - piano primo

### SUPERFICIE CALPESTABILE :

Piano Terra 57.70 mq.  
 Piano Primo 53.00 mq.  
 TOT sup. calpestabile = 110.70 mq.

## Villetta 2

Piano Terra 75.10 mq.  
 Piano Primo 70.75 mq.  
 Area esterna 19.45 mq. ( mq 194.53 al 10%)  
 CONSISTENZA TOTALE COMMERCIALE 165.30 mq.



PROGETTAZIONE - COSTRUZIONE - VENDITA

Via Della Libertà, 5 - Lugo (RA) - Tel. 0545 288329 [www.gruppomargarita.it](http://www.gruppomargarita.it)