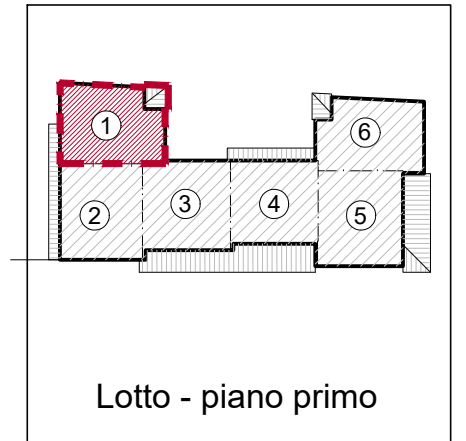
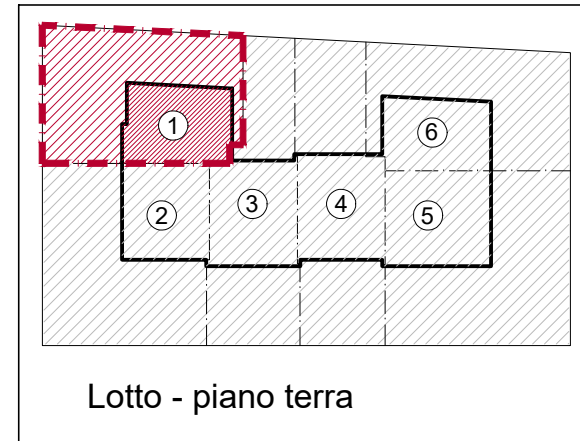
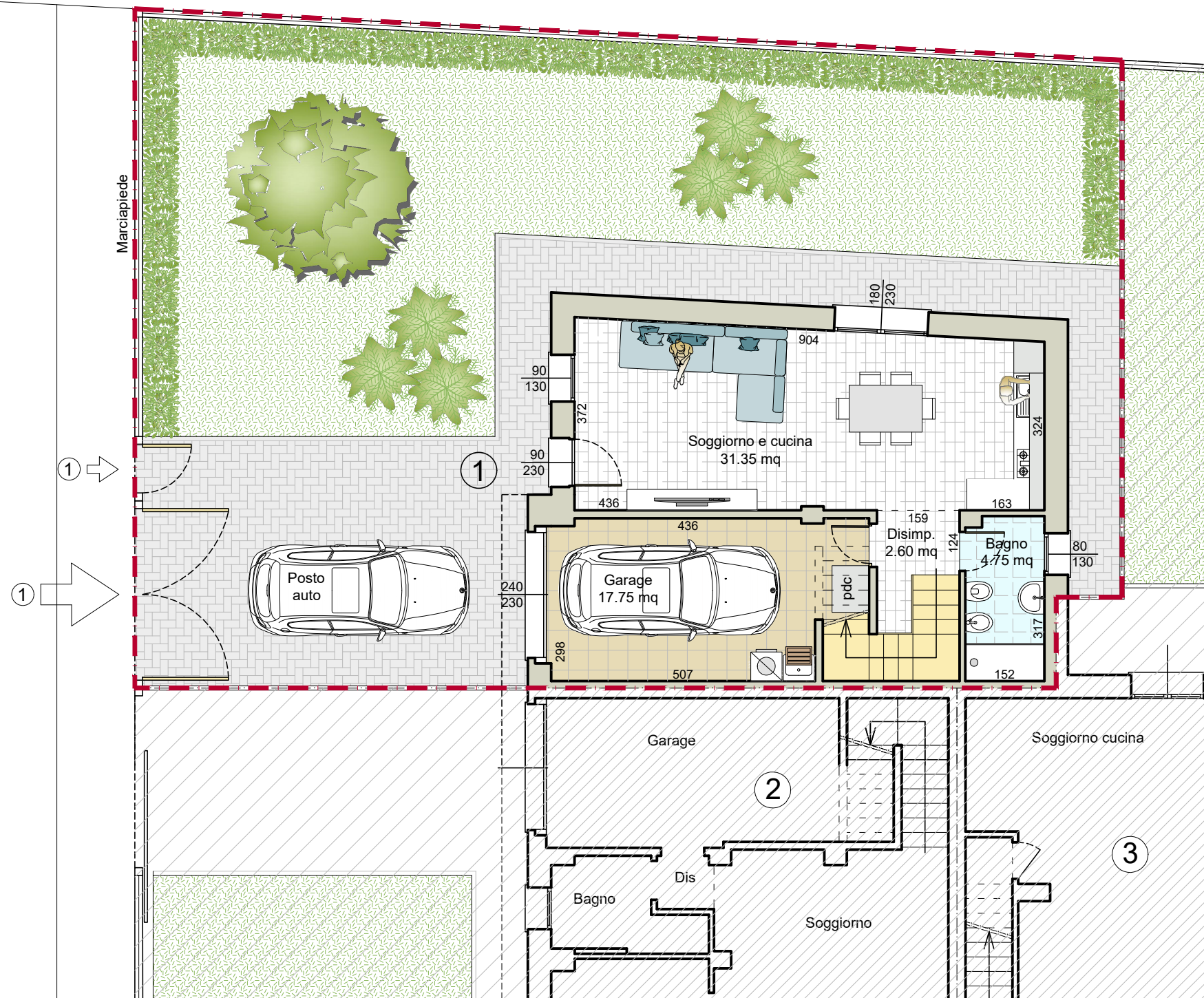
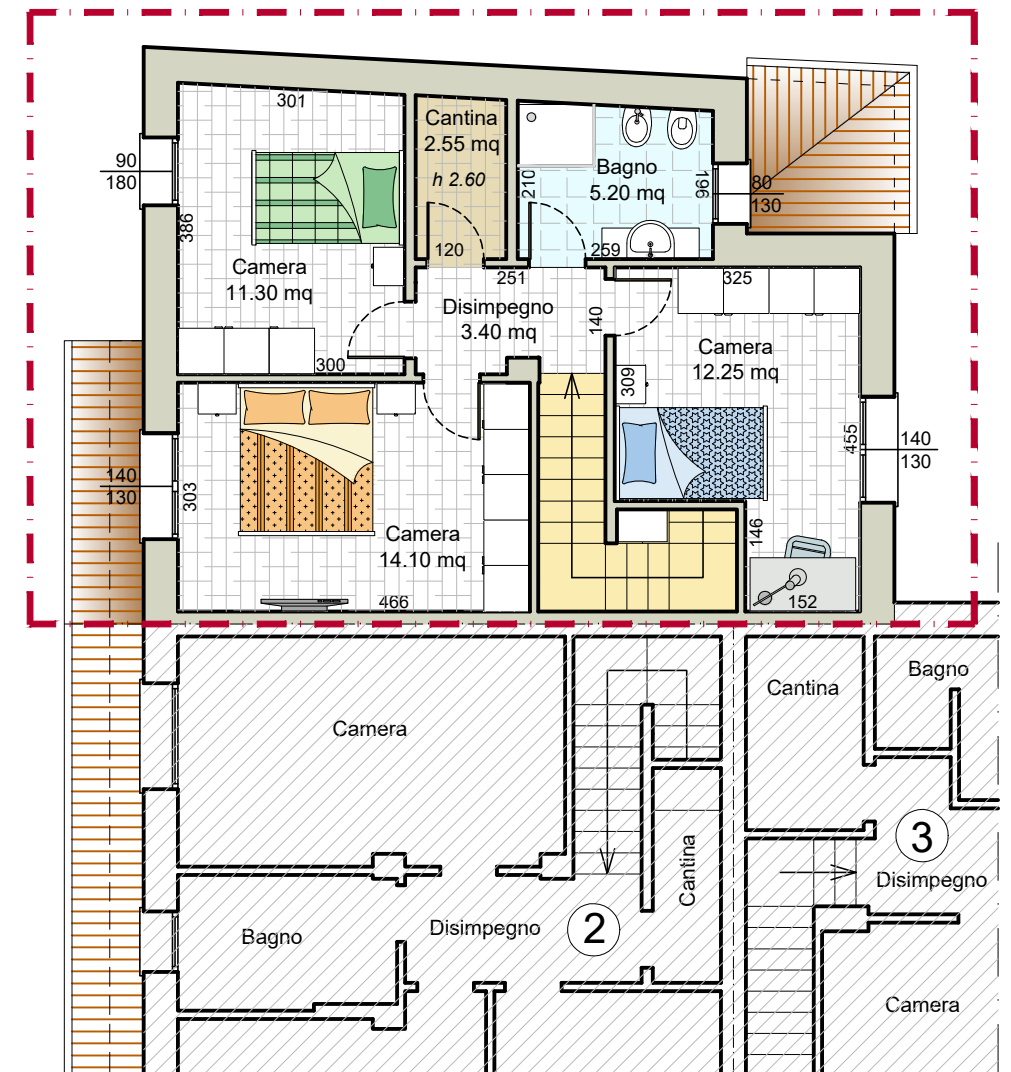




# Piano terra



# Piano primo



### SUPERFICIE CALPESTABILE :

Piano Terra 56.45 mq.  
 Piano Primo 48.80 mq.  
 TOT sup. calpestabile = 105.25 mq.

### Villetta 1

Piano Terra 74.18 mq.  
 Piano Primo 69.30 mq.  
 Area esterna 16.19 mq. ( mq 161.90 al 10%)  
 CONSISTENZA TOTALE COMMERCIALE 159.67 mq.



PROGETTAZIONE - COSTRUZIONE - VENDITA

Via Della Libertà, 5 - Lugo (RA) - Tel. 0545 288329 [www.gruppomargarita.it](http://www.gruppomargarita.it)